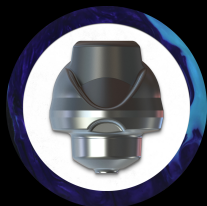
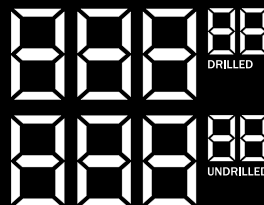




#MTVBEVHYS
EVOKE HYSTERIA

CONDITION:	Medium-Heavy Oil
CORE:	Overload™ Aymmetric Core
COVERSTOCK:	Propulsion™ MXV Pearl Reactive
WEIGHTS:	16 - 12 Pounds



LBS	RG	DIFF	MB DIFF
16	2.48	.032	.011
15	2.48	.036	.013
14	2.51	.033	.012
13	2.57	.028	.009
12	2.64	.020	.007

The Evoke Hysteria is here to cause a ruckus. Designed to create devastating angle on moderately heavy oil, this asymmetric beast fuses the game-changing Overload core with the most adaptable Propulsion cover yet: Propulsion MXV. What does that mean for you? Simple. The Evoke Hysteria isn't just angular—it's a weapon that fits more playing styles and lane conditions than ever before.



Scan to see how I fit on
the MOTIV® Ball Guide